

INSIDE THIS ISSUE

| | |
|------------------------------------|----|
| Zoll Cardiac Monitors..... | 3 |
| Economy Ambulance..... | 5 |
| Upcoming Events | 6 |
| Contact Information..... | 7 |
| Fats, Oils and Grease (FOG) | 8 |
| Tall Grass | 9 |
| Street Light Out? | 9 |
| Leased and Rented Properties | 9 |
| Per Capita Information..... | 10 |



The Recreation Board and Friends will be hosting three movie nights again this summer at Recreation Drive Park on **JUNE 10TH, JULY 8TH and AUGUST 12TH.** Details will be on the Borough's website at www.economyborough.org as the dates draw near.

Receive community notifications by visiting our home page and signing up for [Savvy Citizen](#).



Memorial DAY SERVICE

A Memorial Day Service will be held at **9am on Monday May 30th** at the Veteran's Memorial near the Police Department. Light refreshments will be served in the Municipal Building afterwards. Details will be on the Borough's website at www.economyborough.org.

Receive community notifications by visiting our home page and signing up for [Savvy Citizen](#).





RE/MAX
ALLIANCE REALTY



Val Keeley
Realtor®, ABR®

Long time Economy Boro resident

22420 Perry Highway
Zelienople, PA 16063
724-452-4645, x232 (Office)
724-601-6500 (Cell)
Email: vkeeley@remax.net
Website: vkeeley.remaxagent.com




Family owned
locally grown in
Economy Boro

\$4.00 Off
purchase of \$30 or More
Limit 1 coupon per customer.



320 Golden Drove Road, Baden | 724-630-1316
www.schweikertgreenhouse.com

C AND G
PERFORMANCE, INC.

Import Auto Service & Sales

Specializing in German Vehicles • Other Imports Welcome

724-266-1646

2100 Big Sewickley Creek Rd. • Sewickley, PA 15143
Hours: Mon - Fri 8am-4:30pm
Family owned & operated for 23 years

24 Hr Towing & Recovery
Flatbed & Wrecker Service
Jump Start/Lockout
Hazmat Remediation

HARVEY'S
Auto Body
"We Meet By Accident"



(724) 869-3368
120 Ohio River Blvd, Baden, PA 15005





D & S Running Motors Inc.
ASE CERTIFIED

2140 Conway Wallrose Rd.
Freedom, PA
724-869-7314

HOURS
Mon-Fri: 8am-6p
Sat-Sun: Closed

Established 1957

Smitty's Auto Service, Inc.

2157 Big Sewickley Creek Road, Sewickley, PA 15143

724.266.8660

*Auto & Truck State and Emissions Inspections
Service, Maintenance and Repair*



Lisa Caughey Ins Agcy Inc
Lisa Caughey, Agent
1270 Freedom Crider Rd
www.lisacaughey.com
Bus: 724-774-9010



State Farm, Bloomington, IL

YOUR AD HERE!

This newsletter is produced by Municipal Advertising Consultants with collaboration from Trina Asterino-Nous (*designer*) and Knepper Press. If you would like to place an ad for the next Economy Borough newsletter, please call or text Terry Smith at **(724) 312-2823** or email okterrysmith@icloud.com.



ZOLL CARDIAC MONITORS NOW IN SERVICE

Economy Ambulance recently placed in service four new cardiac monitors from Zoll. The cost of each monitor was approximately \$35,000. With the help of several community groups and other grants along with a \$100,000 loan, they were able to get these state-of-the-art monitors in service.

The crews at Economy Ambulance spent several weeks training on these new devices and have found all the additional features very helpful with patient care. One of the best features of the new monitors is that they are fully upgradable in the future, saving Economy Ambulance replacement costs for many years. Economy Ambulance is still taking donations for the cost of these monitors to help pay off the loan.



ZOLL CARDIAC MONITORS

Early treatment is critical for traumatic brain injury (TBI) patients. ZOLL's TBI Dashboard on the X Series Advanced monitor/defibrillator provides trending information on the parameters most critical to a TBI patient, enabling clinicians to quickly detect potential patient deterioration.

Sewickley Creek Greenhouses

2639 Big Sewickley Creek Road
Sewickley, PA 15143
(724) 935-8500
www.sewickleycreekgreenhouses.com

Economy Borough

JASON PHILLIPS
Cell: 724-630-3293 • Office: 724-776-3686
JasonPhillips@TPRsold.com
www.jasonphillipsrealtor.com

HERE FOR ALL OF YOUR HOME BUYING AND SELLING NEEDS!

Get a **FREE Home Market Evaluation**. If you are considering selling, call me and I will show you how much your property is worth in today's marketplace. It could be worth more than you think.

BERKSHIRE HATHAWAY | The Preferred
HomeServices Realty

© A member of the franchise system of BHH Affiliates, LLC



ECONOMY AMBULANCE

EMS IN CRISIS

A recent Ambulance Association of Pennsylvania Survey revealed that 97% of Ambulance Services surveyed had unfilled positions in their EMS Agencies.

In 2020, 3,436 EMS Certifications were not renewed in Pennsylvania. Nationally an EMS workforce survey found that overall turnover among paramedics and EMT's ranges from 20-30%.

The top four reasons EMS providers left the workforce were wages, burnout, career change and COVID-19. EMS Agencies have increased their wages without the revenue to support it. They are gambling that with additional employees, revenues will increase to offset this. The reason this is a gamble is that the majority of EMS Funding is from reimbursements. When the reimbursements do not occur, no funds are received for that trip. NEMSAC estimates that the nation's ground ambulance services provide \$1.542 billion in Charity Care and \$1.327 billion in Under-compensated Care.



WHAT CAN YOU DO TO HELP?

Encourage elected officials to treat EMS as they would Police, Fire and Roads. Make sure your health insurance provides Ambulance Coverage. Take out an Ambulance Subscription with your local provider. And if nothing else, when you see an EMT or Paramedic, let them know how much you appreciate the job they do.

COMMAND AND SQUAD TRUCKS IN SERVICE

We are excited to announce all three of our stations have a fully equipped vehicle ready to handle most of our medical and

other emergency calls. We prefer to have a squad vehicle answer these calls then send out a large engine truck. The squad can maneuver in tight corners and many off road sites. We also, upgraded our Command vehicle for the Fire Chief from a Ford Explorer to a Ford F150 pickup.

This new pickup allows the Fire Chief to have all the necessary equipment needed to safely command the emergency scenes.



TRAINING SESSIONS ARE ESSENTIAL

We have mentioned several times in recent articles how our fire department trains for all types of calls. Some of these situations have become a reality this past year. We responded to several calls to rescue people who fell over hillsides in our community. Not only did we have to use ropes and a stokes basket, but the all-terrain vehicle was utilized for transporting the victim.

Storms caused our residences many issues last summer and fall. Some of the heavy rains and strong winds brought down large trees and power lines. During one storm heavy rains caused Big Sewickley Creek to over flow which resulted in several roads to be closed. The fire department assisted our police with closing three roads until the creek water lowered enough to open the roads.



FIRE CHIEF REQUEST

Chief Ted Brickner does not want a repeat of brush fires this season as seen last year at this time. Hopefully if the weather stays wet we will not have to be concerned. It only takes a week of dry weather for the opportunity to have these fires. We ask you to be careful when burning outdoors and to obey the borough codes.



ECONOMY BOROUGH UPCOMING EVENTS

Yard Waste Drop-off Container

A Yard Waste drop-off container is available near the ball field at the Municipal Park. Leaves, grass and garden waste can be dumped there (no plastic bags). This is by permit only (\$30 per calendar year) which includes curbside brush chipping by appointment. Please call the Borough Office for more details.



Grass Clippings

While cutting grass, please keep the clippings off the road. Six months of clippings can add up and adversely effect storm water systems adding additional nitrogen to the waterways.

Garage Sales

The Borough has a fee schedule for garage sales as follows: \$10 for 3 to 5 homes, \$25 for 6 to 10 homes, \$100 for 11 to 20 homes and \$350 for 21 or more homes. These fees help cover costs for police to monitor garage sales ensuring that roads remain passable.



VISIT OUR WEBSITE
www.economyborough.org
and give us your ideas for improvement.

The Borough employees and Economy Borough Police
Department wish you a wonderful year!



ECONOMY BOROUGH CONTACT INFORMATION



| BOROUGH OFFICE | | 724-869-4779 | |
|---|--------------|---|--------------|
| Randy Kunkle, Manager | x1 | randy@economyborough.org | |
| Travis Cavanaugh, Assistant Manager/Secretary | x2 | travis@economyborough.org | |
| Ted Brickner, Public Works Foreman | x4 | ted@economyborough.org | |
| John Thomas, Code Enforcement/Zoning Officer | x5 | john@economyborough.org | |
| Building Inspector (MDIA), Patrick Duffy | 800-922-6342 | patrickduffy@mdia.us | |
| Earned Income Tax (EIT), Berkheimer | 412-881-6630 | | |
| POLICE DEPARTMENT | | 724-869-7877 (NON-EMERGENCY) economyboropd.com | |
| Chief O'Brien | x11 | mobrien@economyboropd.com | |
| Sgt Lively | x23 | clively@economyboropd.com | |
| Sgt Farah | x26 | dfarah@economyboropd.com | |
| Sgt Woods | x19 | jwoods@economyboropd.com | |
| Cpl Skonieczny | x25 | jskonieczny@economyboropd.com | |
| Cpl Ferragonio | x15 | cferragonio@economyboropd.com | |
| Sr Patrolman Aschley | x27 | naschley@economyboropd.com | |
| Patrolman Mike Truskowski | x24 | mtruskowski@economyboropd.com | |
| Patrolman Pollock | x28 | pollock@economyboropd.com | |
| Derek Amrhein | x22 | damrhein@economyboropd.com | |
| Zach Potts | x17 | zpotts@economyboropd.com | |
| Mayor Jo Ann Borato | x12 | mayor@economyboropd.com | |
| Secretary, Kathy Anderson | x10 | kanderson@economyboropd.com | |
| ECONOMY VOLUNTEER FIRE DEPARTMENT (NON-EMERGENCY) | | | |
| Station 1 | 724-266-3714 | Social Hall | 724-266-1116 |
| Station 2 | 724-266-0417 | Hall Rental | 724-333-0683 |
| Station 3 | 724-869-4381 | | |
| OTHER IMPORTANT CONTACTS (NON-EMERGENCY) | | | |
| Economy Ambulance | 724-266-9111 | | |
| Emergency Management | 724-876-0377 | | |
| Game Commission | 724-238-9523 | | |
| Property Tax, Amy Miller | 724-390-0226 | | |
| Sewage Authority | 724-869-3201 | | |

FATS, OILS AND GREASE (FOG)

Fats, Oils & Grease Buildup



Do Not Pour Down the Drain!

The leading cause of residential sewer backups is FOG—Fats, Oils and Grease. It hardens in pipes over time and when it combines with other solids, it forms blockages leading to backups. No one likes costly repairs.

FOG accumulates in the sewer system in much the same way that cholesterol builds up in your arteries over time.

As FOG congeals in the pipes, wastewater flow is constricted. Then without warning, the pipe is blocked leading to a clog causing a 'heart attack'.

Six tips to keep FOG out of the public sewer system:

1. Never pour grease down sink drains or into toilets or garbage disposals.
2. Pour grease into a covered, disposable container, and put it into the trash.
3. Soak up remaining fats, oils and grease with paper towels and dispose of with your trash.
4. Before you wash pans or dishes, scrape fatty food scraps into the trash—not into the sink or garbage disposal.
5. Put baskets or strainers in sink drains to catch food scraps and other solids, and empty the drain basket or strainer into the trash.
6. Use garbage disposals only for fruits, vegetables and other organic waste.

The easiest way to prevent sewage overflows and prevent backups is keep Fats, Oils and Grease (FOG) out of the system.

Examples of FOG includes:

- Cooking oil
- Butter or margarine
- Lard or shortening
- Dressings and sauces
- Batters and icing
- Dairy products
- Meat fats

| FATS | OILS | GREASE |
|---|---|--|
| <i>Solid at room temperature</i> | <i>Liquid at room temperature</i> | <i>Turns to liquid during cooking, but solidifies when cooled</i> |
| Butter, shortening, margarine Peanut butter Meat trimmings Uncooked poultry skin Dairy: Cheeses, milk, cream, sour cream, Ice cream | Vegetable oil Canola oil Olive oil Corn oil Salad dressings Cooking oils | Gravy Mayonnaise Melted meat fat Bacon and sausage Boiled poultry skin Salad dressing |

Tall Grass



If you've noticed a yard that has not been cut yet this year, it's past time that something is done about it. It seems every year or so the borough gets a call about high grass around the end of June when it's 3' tall and starting to lay over. At that point, it is difficult and expensive to take care of. If it hasn't been cut by the end of May, chances are it's not going to be. Call the borough office, and we'll pay a contractor to take care of it and place a lien against the property. We do this only as a last resort. In addition to the liens, there are other charges and filing fee expenses.

Street Light Out? You Can Report It.



If there is a street light is out and you want it fixed as soon as possible you can report it directly to Duquesne Light. Call 412-393-7100 and you will be asked a few questions then turned over to a customer service representative. You will be asked for the nearest street address and the pole number. That number should be easy to find on the pole itself. Another option is to call the borough office, and we will ask for the same information.



LEASED AND RENTED PROPERTIES

All Properties that are Leased or Rented in Economy Borough must be registered with the Borough Code Enforcement Officer or Borough Secretary on a yearly basis.

It is the responsibility of all owners of leased/rented premises and of all persons who assist in the rental process to register with the Borough Code Enforcement Officer or Borough Secretary, the names and addresses of all persons who have leased, rented or otherwise arranged for the occupation of leased premises in the Borough. All subsequent tenants must be registered within 30 days of occupancy.

Chapter 111 of the Economy Borough Code (found at www.economyborough.org, ordinances, click on blue codebook, go to Chapter 111).

PER CAPITA INFORMATION

Per Capita Tax, or better known as a Head Tax, is a flat rate local tax payable by all adult residents living within a taxing jurisdiction. This tax is an annual tax and is based solely on residency, it is not dependent upon employment or property ownership. The revenue for our Per Capita tax is divided between Economy Borough (1/3) and Ambridge Area School district (AASD) (2/3).

Recently, the Ambridge Area School District (AASD) approached

Economy Borough (and the other subsequent boroughs) regarding the transfer of the Per Capita tax collection to Berkheimer, PA Tax Administration Services. AASD is proposing a two-year trial period on this initiative beginning with the 2022 tax year.

WHY?

There are some noted advantages for Berkheimer collections on this small tax:

Berkheimer's cost for this service is .50 per bill plus postage and is proposed to be split between AASD and Economy Borough. The fee includes printing, processing, etc. The borough/school district incurred the cost of \$4,625,50 for printing alone, in 2021.

Berkheimer has access to wage tax rolls and alike to locate renters and adult children living with their parents. Currently, the only resource the tax office has is hearsay, resident self-reporting or through property ownership. It is difficult to locate renters to levy this tax.

A major advantage to Berkheimer is with delinquent taxes. This advantage is two-fold: Any fees/postage or etc. associated with

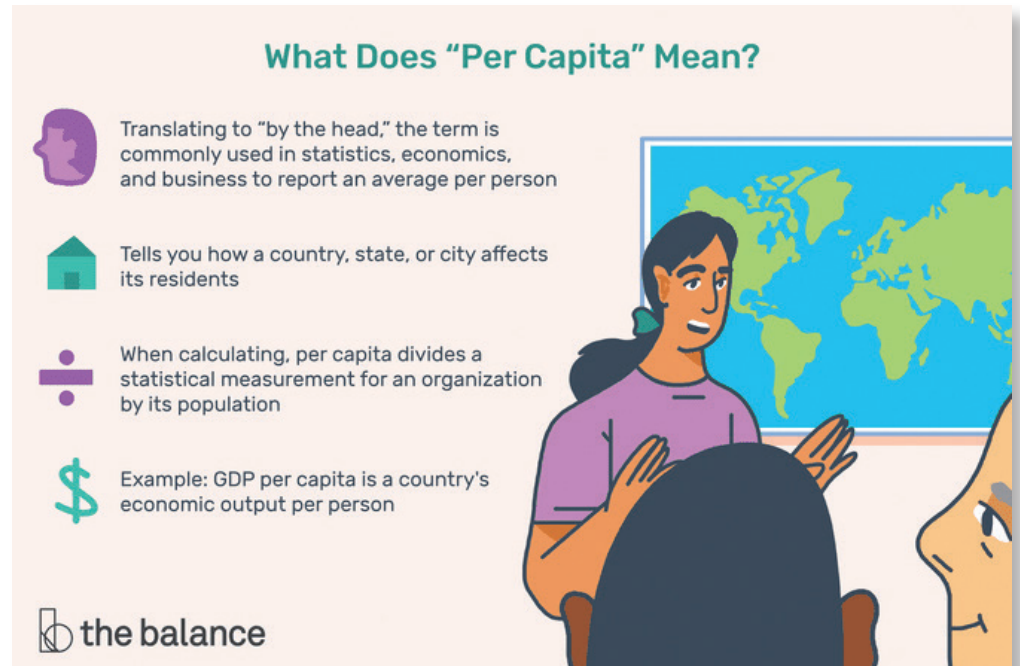
an unpaid Per Capita are passed onto the delinquent bill, through Berkheimer. Currently, the taxing body absorbs these costs. Meaning, in our current state if a resident is delinquent, it costs the taxing body printing fees and postage to mail reminders of Per Capita delinquency. According to Berkheimer, these fees and postage are applied to the bill. The taxing district receives the entire tax revenue for the bill plus penalty. Berkheimer recovers their fees/postage by passing these costs on and subsequently, would be paid for by the resident whose bill is delinquent.

Because of this access to wage tax rolls Berkheimer has the ability to garnish wages for unpaid taxes. Currently, the tax collector does not have this ability to recoup revenue by wage attachment.

WHAT DOES ALL THIS MEAN TO ECONOMY BOROUGH RESIDENTS?

This means come July of this year, the 2022 bills will be distributed and collected by Berkheimer and not the Economy Borough Tax Office.

Currently, the 2021 Per Capita tax is due to the Economy Borough Tax Office by June 30, 2022.





Your Professional Dry Cleaners



- Professional Dry Cleaning
- Executive Shirt Laundry Service
- Professional Tailoring
- Suede and Leather Cleaning
- Drapery Cleaning
- Wedding Gown Cleaning
- All Work Done on premises



RED CAP CLEANING

Serving Beaver County Since 1964

Route 65, Conway, PA 15027 • (724) 869-0880
redcapcleaning.com
 Drive Thru Window Available



\$3.00 OFF

Any Dry Cleaning and Pressing
of \$15.00 or More

*With coupon, must present coupon with
incoming order.
Not valid with any other offer or coupon.
Expires 9/30/22*



\$6.00 OFF

Any Dry Cleaning and Pressing
of \$30.00 or More

*With coupon, must present coupon with
incoming order.
Not valid with any other offer or coupon.
Expires 9/30/22*

Protech Auto Group, Inc.
 Northern Lights Shopping Center
 1645 Beaver Road
 Baden, Pa 15005
 (724) 869-5660

PROTECH AUTO GROUP INC

TIRE & SERVICE CENTER

PROTECH AUTO GROUP

GOODYEAR

Hours:
 M-F 7:30 AM - 6:00 PM
 SAT 8:00 AM - 5:00 PM

**Serving the Economy
 Borough area for
 over 20 years!**



www.ProtechAutoGroup.com



BRIAN'S PROPERTY MAINTENANCE, LLC

Design-Build-Maintain
724-719-7180

BOROUGH OF ECONOMY

2856 Conway Wallrose Road
Baden, Pa 15005-2306
724-869-4779

"Peggy Greb is the agent to call if you're buying or selling in Economy Borough!"



Peggy Greb

724-816-2900 (cell)

724-933-6300 x242

peggy@peggygreb.com

www.PeggyGreb.com

www.EconomyBoroRealEstate.com

RE/MAX
Select
REALTY



PROUD PARTNER OF THE PITTSBURGH STEELERS

PENNDOT FULL AGENT ▼ LOAN SIGNING SERVICES

KIM'S NOTARY SERVICE

155 STATE STREET, BADEN PA



- INSTANT TITLE TRANSFERS, PLATES & REGISTRATION
- FINGERPRINTING CARDS & i-9 FORMS
- NOTARY SERVICES IN OFFICE & ALSO MOBILE
- COPY, PRINT, FAX & MORE!



CALL OR TEXT: 724-462-1148

www.KIMSNOTARY.com