

# THE ECONOMY Connection

SPRING/  
SUMMER  
2025

## INSIDE THIS ISSUE

- The Little Free Library.....3
- From the Police Department.....4
- Concerts in the Park.....4
- Contact Information.....5
- Upcoming Events .....6
- Real Estate Tax Information.....7
- 2025 Scholarships.....7
- Savvy Citizen.....7
- From the Fire Department.....8
- Economy Ambulance Service.....10
- Economy Fire Department Form.....11
- Protecting PA's Waterways.....12
- Preventing Sewer Backups.....13
- Landscape & Plant Wisely.....13
- Leased & Rented Properties.....14
- From the Road Department.....14
- Code Enforcement.....14
- We Care Food Pantry.....14
- New Pavilions.....16
- Veteran's Memorial List.....18



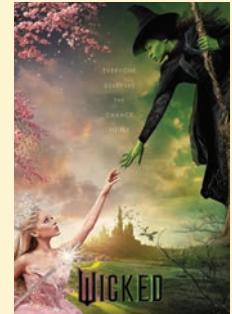
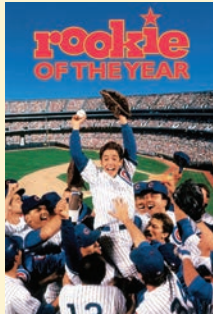
Join us for movie nights taking place this summer at Jeffrey B. Meddock Recreation Park.

Bring your blanket and/or camping chairs. Movies start at dusk.  
**Hope to see you all there!**

FRIDAY, JUNE 20

FRIDAY, JULY 18

FRIDAY, AUGUST 8



**THE PREFERRED REALTOR®  
IN ECONOMY BOROUGH**

Jason Phillips  
(O) 724-776-3686 • (C) 724-630-3293  
JasonPhillips@TPRsold.com  
Jasonphillipsrealtor.com

**BERKSHIRE HATHAWAY** | The Preferred Realty  
HomeServices

© A member of the franchise system of BHH Affiliates, LLC



**CB**  
**COLDWELL BANKER**  
**REALTY**

*Long-time Economy Boro resident & former teacher*

**Val Keeley**  
 Realtor® ABR®, SRES, Senior Real Estate Specialist  
 Office: **724-776-2900** Cell: **724-601-6500**  
 Email: [valerie.keeley@cbrealty.com](mailto:valerie.keeley@cbrealty.com)  
 Visit [valkeeley.com](http://valkeeley.com) by clicking the QR code to see what your home is worth!




Family owned locally grown in Economy Boro

**\$4.00 Off**  
 purchase of \$30 or More

Limit 1 coupon per customer.



320 Golden Grove Road, Baden | 724-630-1316  
[www.schweikertgreenhouse.com](http://www.schweikertgreenhouse.com)



**Sewickley Creek**  
*Greenhouses*

2639 Big Sewickley Creek Road  
 Sewickley, PA 15143  
 (724) 935-8500  
[www.sewickleycreekgreenhouses.com](http://www.sewickleycreekgreenhouses.com)

Established 1957  
 Family owned for 3 generations!

**Smitty's**  
**Auto Service, Inc.**

2157 Big Sewickley Creek Road  
 Sewickley, PA 15143

**724.266.8660**

Auto & Truck State and Emissions  
 Inspections Service,  
 Maintenance and Repair



**Elements Landscape Supply**

(724) 650 - 8418  
 3805 Ohio River Blvd.  
 Baden, PA 15005  
[elementslandscapsupply@gmail.com](mailto:elementslandscapsupply@gmail.com)

**WE DELIVER!**

**TOPSOIL MULCH AGGREGATES & MORE!**




**Lisa Caughey Ins Agcy Inc**  
 Lisa Caughey, Agent  
 1270 Freedom Crider Rd  
 Freedom, PA 15042  
 Bus: 724-774-9010  
[www.lisacaughey.com](http://www.lisacaughey.com)

Like a good neighbor, State Farm is there.®  
 State Farm, Bloomington, IL

# THE LITTLE FREE LIBRARY

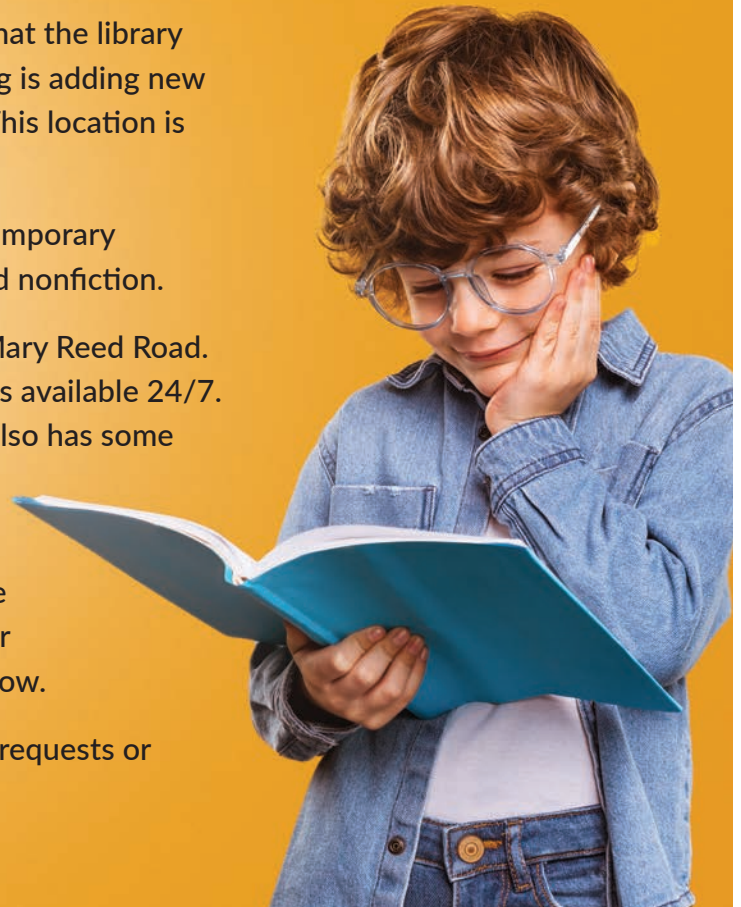
Economy Little Free Library is happy to share that the library inside the Economy Borough Municipal building is adding new space to display our growing book collection. This location is open Monday-Friday from 8:30AM to 4:30PM.

We have books in many genres including contemporary fiction, historical fiction, mystery, children's and nonfiction.

Please stop by the LFL at Recreation Park on Mary Reed Road. It is located near the picnic shelter and access is available 24/7. The library is focused on children's books but also has some young adult and adult titles.

Donations of books are happily accepted and greatly appreciated, but not required to use the library. Follow us on Instagram @economyfl for updates on new titles that are available to borrow.

Contact us at [economyfl@gmail.com](mailto:economyfl@gmail.com) with any requests or suggestions. **Happy Reading!!**



HIC #PA117931



Roofing Additions  
Siding Garages  
Gutters Masonry Work  
Downspouts Concrete  
Soffit/Fascia Windows/Doors

**We Offer Free Estimates!  
Call Us Today!**

412-897-9032 724-266-3843

**HARVEY'S**  
AUTO BODY & TOWING  
*"We Meet By Accident"*

24 Hr Towing & Recovery  
Flatbed & Wrecker Service  
Jump Start/Lockout  
Hazmat Remediation



724-869-3368  
120 Ohio River Blvd, Baden, PA 15005



Nicolas DeFrancesco  
REALTOR®, MBA



BERKSHIRE HATHAWAY  
HomeServices



724-888-9177  
[youragentnic@gmail.com](mailto:youragentnic@gmail.com)  
[youragentnic.net](http://youragentnic.net)  
[@your\\_agent\\_nic](https://www.instagram.com/your_agent_nic)



1005 Beaver Grade Road, Suite 200, Moon Township, PA 15108

**C AND G**  
PERFORMANCE, INC.

Import  
Auto Service  
& Sales

Specializing in German Vehicles • Other Imports Welcome

**724-266-1646**

2100 Big Sewickley Creek Rd. • Sewickley, PA 15143  
Hours: Mon - Fri 8am-4:30pm  
Family owned & operated for 23 years

## ACT 18 OF 2024 PAUL MILLER'S LAW:

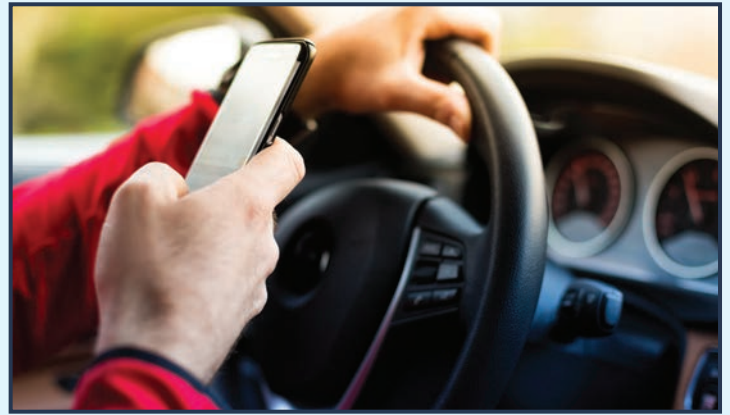
In Pennsylvania, distracted driving contributed to 10.7% of all crashes in the state in 2021, in which, 12,703 car accidents involved a distracted driver, with 58 fatalities. In 2020, over 23,000 people were injured in distraction-related crashes, and 89 people were killed. In 2023, distracted driving was the leading cause of accidents throughout the state.

Act 18 of 2024 is a new offense in Pennsylvania Title 75, Section 3316.1, Prohibiting use of interactive mobile device. This is a distracted driving offense that resulted from a fatal accident where Paul Miller was killed by a distracted driver. The driver of a tractor trailer crossed the grass divider and hit Paul Miller head on. The tractor trailer driver was using his cell phone at the time of the accident.

What is an interactive mobile device? Title 75 defines an interactive mobile device as ***a handheld wireless telephone, personal digital assistant, smart phone, portable or mobile computer or similar device which can be used for voice communication, texting, emailing, browsing the Internet, instant messaging, playing games, taking or transmitting images, recording or broadcasting videos, creating or sharing social media or otherwise sending or receiving electronic data.***

75 Pa.C.S. § 3316.1. Prohibiting the use of interactive mobile device, a new summary offense, makes it illegal to use an interactive mobile device while driving a motor vehicle.

The new offense applies even when the vehicle is temporarily stopped in the traffic flow due to traffic jams or traffic control devices. The law does not apply to those who have pulled safely out of the flow of traffic and who remain stationary.



Prohibited behavior includes holding the device with one hand or supported by the body, pressing more than one button, or reaching in a manner that the driver is no longer seated or restrained by the seat belt.

What does this include? It includes texting, reading or writing emails, searching music, searching and browsing the internet, browsing social media, and holding the phone in your hands while talking; to name a few common ones. It is a primary offense, meaning, a police officer can stop you if you are observed doing any of these things.

This law goes into effect on June 5, 2025, and carries a \$50 fine. Officers are permitted to stop a driver/vehicle for this violation, however, they may only issue warnings until June 5, 2026.

Please, don't let distracted driving prohibit you and everyone else on the road from getting to where they are going. **Drive Safely!**

# CONCERTS IN THE PARK

Join us for concerts in the park taking place this summer at Jeffrey B. Meddock Recreation Park. Bring your blanket and/or camping chairs. Concerts start at 6:30pm. Hope to see you all there!

Friday, June 13th	Friday, July 25th
Friday, June 27th	Friday, August 15th
Friday, July 11th	

# ECONOMY BOROUGH CONTACT INFORMATION

<b>BOROUGH OFFICE</b>		<b>724-869-4779</b>	
Travis Cavanaugh, Borough Manager	x1	travis@economyborough.org	
Ted Brickner, Road Department Foreman	x4	ted@economyborough.org	
John Thomas, Code Enforcement/Zoning Officer	x5	john@economyborough.org	
Building Inspector (MDIA), Patrick Duffy	800-922-6342	patrickduffy@mdia.us	
Earned Income Tax (EIT), Berkheimer	866-701-7206		
<b>POLICE DEPARTMENT</b>		<b>724-869-7877 (NON-EMERGENCY)</b>	
		<b>economyboropd.com</b>	
Chief O'Brien	x11	mobrien@economyboropd.com	
LT Lively	x23	clively@economyboropd.com	
Sgt Farah	x26	dfarah@economyboropd.com	
Sgt Woods	x19	jwoods@economyboropd.com	
Cpl Skonieczny	x25	jskonieczny@economyboropd.com	
Cpl Ferragonio	x15	cferragonio@economyboropd.com	
Sr Patrolman Janectic	x18	mjanectic@economyboropd.com	
Sr Patrolman Aschley	x27	naschley@economyboropd.com	
Sr Patrolman Mike Truskowski	x24	mtruskowski@economyboropd.com	
Sr Patrolman Pollock	x28	pollock@economyboropd.com	
Patrolman Amrhein	x22	damrhein@economyboropd.com	
Patrolman Potts	x17	zpotts@economyboropd.com	
Patrolman Duffley	x20	pduffley@economyboropd.com	
Mayor Jo Ann Borato	x12	mayor@economyboropd.com	
Secretary, Kathy Anderson	x10	kanderson@economyboropd.com	
<b>ECONOMY VOLUNTEER FIRE DEPARTMENT (NON-EMERGENCY)</b>			
Station 1	724-266-3714	Social Hall	724-266-1116
Station 2	724-266-0417	Hall Rental	724-333-0683
Station 3	724-869-4381		
<b>OTHER IMPORTANT CONTACTS (NON-EMERGENCY)</b>			
Economy Ambulance	724-266-9111		
Emergency Management	724-876-0377		
Game Commission	833-742-4868		
Property Tax, Amy Miller	724-390-0226		
Sewage Authority	724-869-3201		

**VISIT OUR WEBSITE**  
**[www.economyborough.org](http://www.economyborough.org)**  
 and give us your ideas for improvement.

The Borough employees and Economy Borough Police Department wish you a wonderful year!

**CHRIS' AUTOMOTIVE**  
**(724) 869-0460**



24 Hour Towing & Recovery  
 Medium Duty Available

1235 First Ave.  
 (Route 65)  
 Conway, PA 15027

# ECONOMY BOROUGH UPCOMING EVENTS

## *Economy Borough Community Day*

The Economy Recreation Board is happy to announce the return of Community Day, which will be on **September 20, 2025, from 2 PM to Fireworks** at the **Borough Municipal Complex, 2856 Conway Wallrose Road, Baden**. Join the festivities featuring a petting zoo, pony rides, and games for children of all ages. The Borough's Police, Fire, and Road Departments will have patrol units, engines, and equipment on display. Economy Ambulance Service will provide free blood pressure screenings. We have not forgotten about the fun for the adults and older children in attendance, as a full day of live bands and numerous vendors from the community and surrounding areas will have booths set up. A wide range of local food vendors will be on hand to serve food.

For more information or to participate in this year's Community Day, please get in touch with Travis Cavanaugh, Borough Manager, at (724) 869-4779, ext. 1, or [travis@economyborough.org](mailto:travis@economyborough.org). For a more detailed list of events, please visit the Borough's website at [www.economyborough.org](http://www.economyborough.org).



## *Yard Waste Drop-off Container*

A Yard Waste drop-off container is available near the ball field at the Municipal Park. Leaves, grass and garden waste can be dumped there (no plastic bags). This is by permit only (\$50 per calendar year) which includes curbside brush chipping by appointment. Please call the Borough Office for more details.



## *Grass Clippings*

While cutting grass, please keep the clippings off the road. Six months of clippings can add up and adversely effect storm water systems adding additional nitrogen to the waterways.



A Memorial Day Service will be held at **9am on Monday May 26th** at the Veteran's Memorial near the Police Department. Details will be on the Borough's website at [www.economyborough.org](http://www.economyborough.org).

Receive community notifications by visiting our home page and signing up for [Savvy Citizen](#).

# REAL ESTATE TAX INFORMATION

BY AMY MILLER, TAX COLLECTOR

Taxes! Navigating them can be a source of frustration. Below is useful information on navigating real estate taxes. Annually, real estate owners are taxed from the county, the borough, and the school district, in that order. Each tax has a 60-day discount period.

## Beaver County:

January–December 31, Discount = 2%, Penalty 10%

## Economy Borough:

March 1–March 31 of the following year,  
Discount = 2%, Penalty 5%

## AA School District:

July–December 31, Discount = 2%, Penalty 10%

A discount is offered for valid payment within the first two months of the billing period.

***If you have not received an Economy tax bill, please contact my office.***

Your Economy Borough Tax Office distributes and collects the local and school district real estate taxes. Beaver County Treasurer Sandie Egley distributes and collects the county taxes.

The local office cannot collect the county tax, prior year taxes, or Per Capita taxes.

## Real Estate Taxes

Amy Miller, Tax Collector Economy/AASD  
724-390-0226 [economytaxcollector@gmail.com](mailto:economytaxcollector@gmail.com)

Sandie Egley, Beaver County Treasurer  
724-770-4540 (county)

Beaver County Assessment Office  
724-770-4480

## Business/Mercantile Taxes, Wage Tax and Per Capita Tax

If you have questions on any of these, please contact Berkheimer (412) 881-3080.

Visit [www.economyborough.org/tax-collection](http://www.economyborough.org/tax-collection) for additional information.

To process your bills in a timely manner **please remember to date, sign, and enter the correct amount on your checks.** Unfortunately, checks not able to be deposited because of missing or incorrect information will be returned.

If you have any questions, please contact me, and I will be happy to answer any questions you may have. Thank you, Amy.



The Economy Borough Civic Club (EBCC) is offering scholarships, up to \$2,000, to high school students residing in Economy Borough who are or will be enrolled in an undergraduate accredited post-secondary education for the fall of 2025.

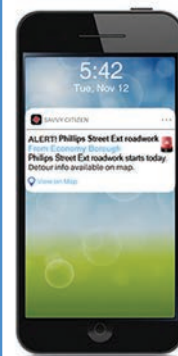
Applications can be picked up at the Economy Borough office or downloaded from the Economy Borough website: [www.economyborough.org](http://www.economyborough.org).

**DEADLINE FOR RETURNED APPLICATIONS:  
AUGUST 1, 2025.**

## Want to know what's going on in Economy Borough?



### Sign up for Savvy Citizen®



Savvy Citizen will keep you better informed of important borough news and happenings in our community.

Sign-up for Apple and Android users is simple and free. Become more savvy and receive useful borough updates, community news and event reminders by downloading today.

***Become a Savvy Citizen!***

Visit:

[SavvyCitizenApp.com](http://SavvyCitizenApp.com)

Point your phone's camera:



Download the app:



# FIRE DEPARTMENT YEARLY REPORT

*The Fire Department had a busy year in 2024. We responded to 254 calls. A breakdown shows some of the incidents in which we responded. Our department dealt with twelve structure fires. We assisted the police with 18 vehicle accidents with injuries. A high number of calls were weather related such as power lines down (42), trees blocking roadway (12), and flooded roads (9), resulting in 63 incidences.*

## BEWARE OF OUTDOOR BURNING

It is that time of year again. Yes, brush fire season. People are outside cleaning up their yards and most try to burn debris. Chief Brickner has a warning for those who might not understand our ordinances. Under burning code Chapter 62, it outlines procedures to follow. Basically, burning is only permitted Tuesday through Saturday, sunrise to sunset. The burning must be well-contained, such as a barrel. If someone has a larger pile to burn, they must obtain permission from our Fire Marshall, Jake Thomas. He can be contacted by calling 724-869-4779. Our department extinguished twelve brush fires. Some were quickly distinguished but others took up to four hours to control.



## ELECTRIC VEHICLE FIRES

The emergency call we are not looking forward to is an electric vehicle fire. Last year, we had five vehicle fires. Most of the time, an engine can extinguish a car fire in three to five minutes and use 200 gallons of water. But upon researching fires in electric vehicles, there are many issues to deal with. One is the extreme heat which can reach over 1200°, and they release toxic and flammable gases. We learned from other departments that they used up to 28,000 gallons of water to finally extinguished this type of fire. To put it into perspective, this is the amount of water an average family uses in two years. Furthermore, it was revealed that using water or foam is not very effective. Applying tens of thousands of gallons of water may not totally stop the fire. Many times, they re-ignite. Chief Brickner and his officers are trying to determine the best way to extinguish these fires.



## VARIOUS CALLS WE ANSWER

Some of the situations we responded to show the way certain equipment is needed. No longer is the day when the fire departments mainly answer just fire calls or alarms. Now, we handle any traffic accidents with injuries or leaking fluids on the road. We also cover carbon monoxide alarms and wires/trees down. Every year, we are requested by the police to search for a missing person or someone who fell over a hillside. Quite a few of these calls require several hours to handle them. This brings up the ability to have sufficient man and woman power to respond to these calls. It is very difficult today for many departments.



## KEEP THEIR STATION OPEN IN PENNSYLVANIA

The required hours of training by the state and local hours by every department makes it a hardship for a lot of volunteers. The training is needed to keep up with all the different types of calls we take on. The latest numbers in Pennsylvania show why many departments are struggling to keep up with their ranks. Since the early 1980's, there were 360,000 volunteers. Today, that number is at 37,000. This is a 90% drop in personnel to answer everyday incidents.

We are very fortunate as our staffing is sufficient to handle calls all hours of the day. "We have a good group of people who are willing to put the time in to train. In addition, we work together as a team", said Chief Ted Brickner. What impresses the chief the most is the department is made up of all volunteers.



## MEET YOUR MEDICS

This spring, we would like to introduce to you Kevin Daniel. Kevin has worked for Economy Ambulance since 1990. Kevin started at Economy as a part-time Emergency Medical Technician while he worked at Beaver County 911 as a dispatcher. In 2020, Kevin retired from the 911 Center. Shortly after, he came on full-time at Economy. As Economy Ambulance continued to grow, additional help would be needed in the office with billing and other office duties. Kevin initially started helping in the office on occasion but quickly jumped into it full-time. He took the initiative to attend and be certified in Medical Billing Coding. Kevin's years of experience in the field has been an asset to the office staff.

Although scheduled in the office weekly, it is not unusual for him to help on crew or to act as a quick response person when an ambulance has a longer response time. Kevin is an Ambridge Graduate and was a Volunteer Fireman for the Conway Volunteer Fire Department for many years. He still resides in Conway today.



## DID YOU KNOW?



Did you know that Emergency Medical Workers have some of the highest number of Workers Compensation Claims out of all professions? That is why Economy Ambulance Service is doing everything possible to mitigate these injuries. Several years ago, they purchased Power Stretchers. What this means is the stretchers have a battery and a hydraulic pump to assist the crew with raising and lowering the stretcher.

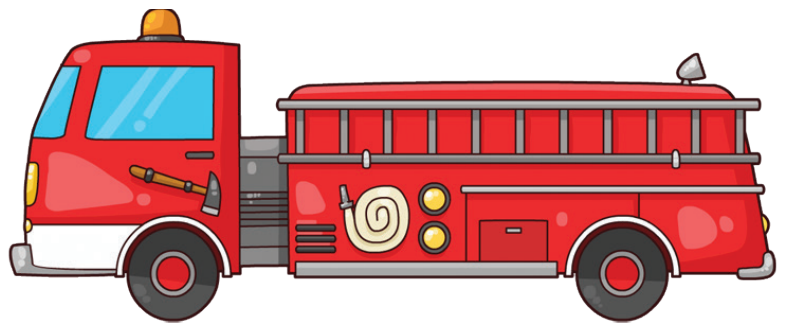
Now they are going one-step further. The device you see in the picture actually will lift the stretcher from street level and load it into the truck with minimal physical effort from a crewmember. They just have to push a button.

Currently, Economy Ambulance has four of these in service with only two trucks left to equip. You are probably asking, if they are so beneficial, why they do not have them in all the trucks. As usual, it comes down to cost. The unit pictured costs in excess of \$25,000 and plus the additional expense of installation. When you see the donation requests come from Economy Ambulance, please consider giving as much as you can.

**IF WE CAN'T  
FIND YOU,  
WE CAN'T  
HELP YOU**



**ONLY  
\$30!**



## **Economy Fire Dept. Station #3**

### **Features:**

- Highly visible day or night
- Reflective material on both sides
- Fade resistant, lasting for years
- Pre-drilled holes

*Order your reflective address marker today! It may help save your life or the life of someone you love.*

For more information, call  
**724-869-5435**

## **Reflective Address Marker Order Form**

Please complete the following information:

Name \_\_\_\_\_

Address \_\_\_\_\_

City, State & Zip \_\_\_\_\_

Phone \_\_\_\_\_

### **Address Number Requested**

*Note: If your address has fewer than 5 digits, please X the boxes not used.*

--	--	--	--	--

### **Mounting Preference**

Horizontal     Vertical

**Mail form and \$30 payment to:**

**Economy Fire Dept. #3, 2854 Conway Wallrose Road, Economy Borough, Baden, PA 15005**

# Pennsylvania Urban Nutrient Management— Be Green While Protecting Our Streams

## PROTECTING PENNSYLVANIA'S WATERWAYS STARTS AT HOME

Turf grass has become a major component of Pennsylvania's flora. In fact, according to DCNR, Pennsylvania now contains over 2 million acres of lawn. Selecting a proper turf grass management program, whether it is on a private lawn, sports field, public park, or golf course, is essential to protecting our local waterways.

### KNOW WHAT YOUR LAWN NEEDS

When looking to apply nutrients to your lawn, make sure you are aware of what your lawn needs and what the Pennsylvania Fertilizer Law allows. To determine your lawn's nutrient needs, it is best to first soil test. Soil tests provide specific recommendations for nitrogen, phosphate, and potassium. Following the soil test recommendations ensures that you are applying only what your lawn needs, thus reducing nutrient loss and fertilizer cost. Test kits can be purchased for a nominal fee from your local Penn State extension office.

### THE PENNSYLVANIA FERTILIZER LAW

In July 2022, Pennsylvania adopted a new fertilizer law designed to minimize the movement of nutrients into our waterways. Anyone who applies fertilizers should be aware of the following nutrient limitations.

- Nitrogen is limited to 0.9 pounds of total nitrogen and 0.7 pounds of available nitrogen per 1000 ft per application.
- No phosphorus can be applied unless establishing or repairing turf.
- Both the nitrogen and phosphorus rates can be adjusted based on soil test recommendations and/or if using an enhanced efficiency fertilizer.
  - Enhanced efficiency fertilizers are specifically designed to reduce nutrient losses to the environment while increasing availability to plants.

In addition, when applying fertilizer, applicators must follow specific environmental conditions to prevent direct movement of fertilizer nutrients into our streams.

- Do not apply if a heavy rain is expected.
- Keep fertilizer away from drainage ditches, storm drains, or water.
- Maintain a 15-foot buffer from the banks of all waterways.
- Remove fertilizer that lands on impervious surfaces (i.e. driveways, sidewalks, roads) back onto the application area.
- Do not use as a snow or ice melt.
- Do not spread fertilizer on snow-covered or frozen ground.
- Fertilizer application between December 15

and March 1 is restricted to 0.50 lbs of total nitrogen per 1000 ft per application.

### READ THE LABEL

Manufacturers of fertilizer products must include detailed labels that provide the nutrient content and instructions for use. As a fertilizer applicator, you are strongly encouraged to read and follow all directions and apply your fertilizer using a properly calibrated spreader.

### LAWN CARE CONSIDERATIONS

Nutrient management is not the only tool that can be used for limiting nutrient loss. There are many additional lawn care considerations that can be used to promote a healthy lawn while protecting our local waterways. A few examples are listed below.

**Fertilizer may not be the solution.** If your lawn is not looking as healthy and green as you would like, sometimes fertilizer is not the answer. Applying fertilizer without understanding the underlying soil can result in a waste of money and nutrients. There are many soil health factors that play a critical role in maintaining your lawn. Reducing soil compaction can improve root growth and water infiltration. Maintaining an appropriate soil pH is essential to promoting proper nutrient availability. Soil texture and organic matter content influence water movement, nutrient availability, and the microbial ecosystem of the soil. A healthy soil supports a healthy lawn.

**Raise your mower deck.** Set your mower deck to 3 inches or higher. A taller lawn provides shade that discourages weed growth and promotes strong root development helping lawns to withstand environmental stress. Alternatively, you can use low mow turf species, such as fine fescue blends, that do best when mowing is limited. A taller, healthier lawn slows water movement and increases infiltration keeping moisture, soil, and nutrients where they are needed most.

**Mulch your grass clippings.** Keeping your clippings in place returns valuable organic matter and nutrients to your lawn.

**Provide a buffer.** Do not mow up to the banks of streams. Maintaining vegetative buffers along waterways provides wildlife habitat while slowing and filtering water before it enters the stream.

**Convert your lawn.** Replacing turf with native vegetation not only increases water infiltration, but also promotes biodiversity and creates habitats for pollinators and other wildlife. For more information on Lawn Conversion visit DCNR's website.

### WORKING TOGETHER FOR CLEAN WATER

Environmental stewardship requires teamwork. Help protect Pennsylvania's waterways by being wise when you fertilize!

For more information on the Pennsylvania Fertilizer Law, visit the Department of Agriculture's website at [www.agriculture.pa.gov/fertilizer](http://www.agriculture.pa.gov/fertilizer) or contact Denise Uzupis at [duzupis@pa.gov](mailto:duzupis@pa.gov).

# PREVENTING SANITARY SEWER BACKUPS

## WHAT IS A SANITARY SEWER BACKUP?

A sanitary sewer backup occurs when sewage backflows through a drain, toilet, trap or other fixture into your home. This may indicate that there is a blockage in your sanitary sewer line (lateral) or EBMA's sewer main. Backups may result in expensive cleanup costs, repairs to your home, and loss of personal possessions.

Blockages may also trigger an overflow or backup of sewage into your yard, street or waterways creating a public health risk and threatening the environment.

You can help prevent sewer backups by practicing the following:

### DO:

- Put cooking grease and oil into a container for disposal with your garbage.
- Use sink and shower drain strainers.
- Install a backwater prevention valve (contact your plumber for details).
- Seal off any basement floor drains if they are connected to the public sewer system.
- Consider purchasing sewage backup insurance which is not typically covered under a standard homeowner's insurance policy.

### DON'T:

- Pour cooking grease or oil down your drains.
- Use your toilet as a trash can.
- Plant shrubs or trees close to your sanitary sewer lateral.
- Cover your vent pipe or hide them in flower beds.
- Connect sump pumps or rain gutters to the sanitary sewer.

**Sewage Systems Do's & Don'ts**

Septic tank care and maintenance might seem daunting but with some easy changes, you can:

- Extend the life of your system
- Save money
- Protecting the environment

**The Don'ts:**

1. **Don't put Fats, Oils or Grease (FOG) down your drain.** These can clog up your system and pipes!
2. **Don't flush any non-Biodegradables.** these include wet wipes (even flushable ones), sanitary products, nappies etc. They contain plastic which will block your pipes and system!
3. **Don't use Harsh Cleaning Chemicals.** This includes bleach, disinfectants and drain cleaners. They will kill your system's helpful bacteria and risk releasing untreated sewage! Flushing other chemicals like medicines, garden and car chemicals can be even worse for your system
4. **Don't put food scraps or coffee grounds down the drain.** They can both block your system and pipes while also damaging the environment by releasing an excess of nitrates and phosphates! Large amounts of dairy waste can also be very damaging.

**The Do's:**

1. **Do Use septic-safe Cleaning Products sparingly.** These are biodegradable products that can limit the harm to the bacteria in your system. Also, make sure you stick to the same products so the bacteria in your system can get used to them.
2. **Do conserve water where possible.** Excess water use reduces your tank efficiency. Make sure to use eco settings on appliances and opt for a shower over a bath (sorry bath people!)
3. **Do regular maintenance and desludging with a licensed waste company.** This will make sure your system is working at peak efficiency and prevent untreated wastewater from ending up in your garden!

**If in doubt it can be flushed, just bag and bin or take to your local recycling centre**

## LANDSCAPE & PLANT WISELY!

Beautifully landscaped yards can be a joy to homeowners that can turn into expensive nightmares. Roots from trees can invade building sanitary sewers and laterals. Roots thrive in the warm, moist, nutrient-rich atmosphere above the water level inside sanitary sewers.

The flow of warm water inside the sanitary sewer pipe causes water vapor to escape to the cold and/or dry soil surrounding the sanitary sewer pipe. Tree roots are attracted to the water vapor leaving the sanitary sewer pipe and they follow the vapor trail to the source of the moisture.

Tree roots will penetrate the opening from cracks or loose sanitary sewer pipe joints to reach the nutrients and moisture inside the sanitary pipe. Even though trees appear to be dormant in the winter, severe root intrusion underground can cause structurally damaged sanitary sewer pipes that will require replacement.

Tree roots growing inside sanitary sewer pipes could potentially become a costly problem for Borough residents and their neighbors. Roots can travel far underground, across property lines and under paved roads.

The best way to avoid this situation is to plant wisely. Do not plant trees within 20 feet from any building sanitary sewer, lateral, manhole or sewer main.

Please remember, in Pennsylvania, homeowners and contractors are required to contact PA One Call, before you dig. Dial 811, at least three business days before starting any digging or excavation project.

Go to [www.paonecall.org](http://www.paonecall.org) for more information.

# LEASED AND RENTED PROPERTIES

All Properties that are Leased or Rented in Economy Borough must be registered with the Borough Code Enforcement Officer or Borough Secretary on a yearly basis.

It is the responsibility of all owners of leased/rented premises and of all persons who assist in the rental process to register with the Borough Code Enforcement Officer or Borough Secretary, the names and addresses of all persons who have leased, rented or otherwise arranged for the occupation of leased premises in the Borough. All subsequent tenants must be registered within 30 days of occupancy.

Chapter 111 of the Economy Borough Code (found at [www.economyborough.org](http://www.economyborough.org), ordinances, click on blue codebook, go to Chapter 111).



# FROM THE ROAD DEPARTMENT

Road Department employees will soon begin to sweep the roads. We have one street sweeper and each road will require multiple passes making the project of street sweeping several weeks long. We will then be focused on mowing road berms and a few projects to improve drainage issues.

Residents are encouraged to help keep streets clean by picking up litter, mowing their yards so grass clippings and leaves do not blow onto the road surface. Don't put anything into the drainage inlets as it will enter a waterway untreated. The borough appreciates you help in these matters.



# REMINDERS FROM CODE ENFORCEMENT

**NO IMPACT HOME BASED BUSINESS:** There are 10 requirements this type of business must meet to qualify. They can be found in the Borough's Code by going to [www.economyborough.org](http://www.economyborough.org); go to Ordinances, go to the last chapter #180 then to 180-78. The final requirement is to register annually in January with the Zoning Officer to verify the requirements are being maintained.

**FOOD TRUCK VENDORS:** A Mobile Food Vendors License is required to operate a Food Truck in the Borough, which are issued by the Code Enforcement Officer.

**ACCESSORY USES (GARAGES, SHEDS, DECKS, POOLS, FENCES, ETC.):** all require a permit from the Code Enforcement Officer.

**DRIVEWAY PERMITS:** are required for all new driveways to ensure they are safe and have proper sight distance. Drainage also must be accounted for. Existing driveways can be repaired or paved without a permit.

## WE CARE FOOD PANTRY

The volunteers and those who utilize the We Care Food Pantry at the Baden Methodist Church are very appreciative of the generosity of the Economy residents. The annual Christmas food drive conducted by the Fire Department resulted in 4500 lbs of food delivered to our Food Bank!



**D & S Running Motors Inc.**  
ASE CERTIFIED

2140 Conway Wallrose Rd.  
Freedom, PA  
**724-869-7314**

**HOURS**  
Mon-Fri: 8am-6p  
Sat-Sun: Closed

Elect  
**Adam Johnston**  
District Magistrate  
Economy Borough, New Sewickley Twp., Conway,  
Freedom, East Rochester, Rochester Borough



Primary Election  
May 20, 2025

ELECT  
**Nicole Thompson**  
for  
Economy Borough Tax Collector



Vote for 10 Years of Experience

★ELECT★  
Ronald  
**LEINDECKER**  
for  
**MAGISTERIAL DISTRICT JUDGE**  
knowledge ★ integrity ★ strength  
paid for by the candidate

Vote  
**KOWAL**  
**FOR MAYOR**  
*Together we can build a brighter future for Economy  
Borough—a leader who listens, acts and delivers.*

RE-ELECT  
**JO ANN BORATO**  
**FOR MAYOR**  
To my Democrat friends please remember  
to write me in for the primary!

  
**Miller**  
For  
**Tax Collector**  
<https://millerforeconomyboro.com>

**YOUR AD HERE!**  
This newsletter is produced by [Municipal Advertising Consultants](#) with collaboration from [Trina Asterino-Nous](#) (graphic designer) and Gazette Printing. If you would like to place an ad in the next Economy Borough newsletter, please call Terry at (724) 312-2823, or email him at [buyadsfromme@gmail.com](mailto:buyadsfromme@gmail.com).

Vote  
**JESSE HERNANDEZ**  
**FOR BOROUGH COUNCIL**  
*Jesse will keep Economy's future growing while  
remaining tastefully rural unlike any other!*

# NEW PAVILIONS

We are pleased to announce that the two new pavilions are available for rent. Both pavilions include ceiling fans, picnic tables, electricity, and water and can accommodate up to 36 people. One of the new pavilions is located next to the playground behind the municipal building, and the other is at the Jeffrey B.

Meddock Recreation Park off Mary Reed Road. Small charcoal grills will be located at both locations in the near future. The cost to rent either is \$50.

Call the Borough Office at (724) 869-4779, Ext. 1, to reserve either pavilion.



## NOW HIRING CAREGIVERS Start Your Career in Home Care!

### CLIENT SERVICES

- PERSONALIZED CARE  
CONVERSATION &  
COMPANIONSHIP
- MEDICATION REMINDERS
- LIGHT HOUSEKEEPING  
& LAUNDRY
- BATHING & PERSONAL CARE
- MEAL PREPARATION &  
NUTRITION
- ERRANDS

### CAREGIVER BENEFITS

- HEALTH INSURANCE
- LIFE INSURANCE
- TIME & 1/2 FOR  
OVERTIME & HOLIDAYS
- 401K & RETIREMENT PLAN
- PAID SICK DAYS
- DIRECT DEPOSIT & DAILY PAY



Together,  
we find  
a way  
to care for you.



**PATRIOTHOME CARE.ORG**  
**Call (724) 506-8911**  
1225 7th Avenue Beaver Falls, PA 15010

- » Tree Removal
- » Stump Removal
- » Lot Clearing
- » Tree/Shrub Trimming
- » Gutter Cleaning/Leaf Removal
- » And more...

- » Locally owned and operated
- » More than 10 years of experience
- » Fair and honest bidding
- » Discounts offered for all veterans and military personnel
- » Call 24/7 for emergency services
- » Guaranteed speedy response to any inquiries

**Call Justin to schedule a FREE estimate!**

Justin R. Bauman  
**724-650-2577**  
jrbauman91@comcast.net

**BAUMAN**  
Tree and Stump Removal



**NEW ALL BRICK PATIO  
HOMES FROM \$390s**

5 Different Floor Plans • 9' and Cathedral Ceilings • \$175 Maintenance Fee

- Ranch and Carriage Homes Available for Immediate Occupancy
- 2, 3 or 4 Bedrooms, 2 1/2 Bathrooms
- 2-Car Garage All Homes
- Community Center and Pool

*Visit Our Decorated Models*  
**128 Shady River Blvd. Baden, PA 15005**  
*By Appointment*

Dana Zokaite  
**412-334-0536**  
dana@zokaite.com



[www.VillasofEconomy.com](http://www.VillasofEconomy.com)

# ECONOMY BOROUGH VETERAN'S MEMORIAL LIST

**THE ECONOMY BOROUGH VETERAN'S COMMITTEE HAS LOWERED THE MEMORIAL FLAG IN HONOR OF THE FOLLOWING VETERANS:**

## US ARMY

Manuel Alvarez  
Tommy Lee Barnabi  
Joseph J. Barsic  
Donald Barto  
Melvin Barto  
William Blasko  
John C. Blum, Sr.  
Thomas Boring  
John J. Boyt  
Melvin "George" Brehm  
George S. Brown  
Stephen Brylinsky  
John F. Chehovits  
Steve Chehovits  
Richard Jerome "RJ" Coleman  
George J. Cokrlc  
Charles E. Condit  
Preston H. Covert  
Bernard L. Crawley  
William Francis Crawford  
Charles J. Cutright  
Andrew Darno, Jr.  
Donald "Duck" Davis  
Stanley T. Dennis  
William F. Devinney  
Michael W. Downey  
Joseph P. Duke  
Joseph P. Dulee  
Larry Dupont  
Frederick A. Engel  
Mike N. Farah  
John D. Fardo  
Alvin C. Freshwater  
John A. Glomosila  
Richard A. Greenhouse  
Donald J. Gross  
James E. Gross  
Joseph H. Gross  
Paul A. Gross  
Robert J. Gross  
William H. Gross  
Edward S. Gruszczynski, Jr.  
James Harrington  
Gerald A. Hartle  
Lawrence A. Hartle  
Harold W. Hendrickson  
Norman P. Hendrickson  
Frank "Mooney" Hribar  
Robert J. Hartman, Sr.  
Frederick J. Hughes  
John H. Huppenthal

Michael A. Huppenthal, Jr.  
Ralph H. Johnson  
Charles F. Jurcak  
Edward John Kascek  
Edward L. Kelleher  
Daniel B. Kelly  
Earl E. Kifer  
Ben F. Killian  
John Kirish  
Eugene D. Kokoski  
Michael Kowal  
David E. Kunsman  
Richard T. Kuny  
John S. "Jack" Kutzko  
Charles W. Lutz  
Robert R. Mack, Sr.  
Wallace G. Marsh  
Clarence Mattern  
Lawrence Mattern  
Richard Mattern  
Robert Mattern  
William Mattern  
James McPeck  
Richard J. Miller  
William F. Miller  
Steve E. Mosura  
Donald E. Musgrave  
Ronald J. Nemchek  
Philip P. Neteros  
Julius Parisi  
Sam Pelaia  
Albert C. Peterson  
Richard J. Petruskie  
Louis F. Pomeaick, Sr.  
Charles Lee Price  
Albert J. Rabovsky, Sr.  
Ralph S. Rhone  
George Richardson, Sr.  
Michael A. Roppo  
James "Reed" Scheppy, Jr.  
Mike Semonik, Jr.  
Gifford "Bud" Sheesley  
Richard Shirey  
William Sivewright  
Joseph S. Span  
Domenick Tallerico  
James C. Tate  
Vincent Testa  
Dennis L. Val  
Anthony R. Viscuso, Sr.  
James P. Wetzel  
Kenneth Wigton  
William Zaccagnini

## US AIR FORCE

Gerald R. Bennett  
William A. Bremner  
A. Bruce Foringer  
Robert W. Garlick  
James E. Huey  
Noel Mohn  
Charles "Skip" Raabe  
Gerald Rombach  
Thomas E. Rossi  
Erin Pfeifer Schoen  
James Shaddock  
Robert W. Vignere  
James Ward  
John L. Walley  
James L. Woods  
Richard Brooks

## US ARMY AIR CORP

Donald P. Double  
William Dreyer  
Charles Loedding  
Herbert L. Wagner  
Lester R. Wagner

## US ARMY & AIR FORCE

Reuben Brown

## US ARMY & NAVY

William "Bill" Waslo  
Kenneth A. Condit

## US ARMY NURSE CORPS

Robert Gans Zellers

## AIR NATIONAL GUARD

Gilbert Neil Nesbitt  
Timothy John Swiderski  
Nicholas Woodham

## US COAST GUARD

John F. "Skip" Lorenzo, Jr.

## US MERCHANT MARINES

Glenn Leise

## US MARINES

Harry Belkowski  
Robert D. Chess  
James R. Dempsey  
George C. Edling

Robert J. Felo  
Erich G. Knechtel  
Charles Miller  
Anthony Pane  
Oliver G. Seamon  
Gerald Slappo  
Joseph A. Topolewski  
Paul C. Yoos

## US NAVY

Walter Alushin  
James Andrus  
Michael B. Andrus James  
H. Barnhart Boyd Barto  
Walter Louis Bartosh William  
H. Beck, Jr. John Boyd  
Robert L. Brooks Gideon  
Bucuren Arthur Cress  
Paul J. Cymbalak George Darno  
Mary June Dempsey  
Paul B. Gardner  
James Andrew Gerst Raymond  
Hendrickson Milton Hertneky  
Frank J. Hollein, Jr. Lloyd R.  
Huey, Sr. Frank F. Huppenthal,  
Sr. Daniel V. Kelly  
Dan H. Kerr  
Joseph J. Klimkowski Alex  
Max Kouvolo John Kowal  
Mark Kubick  
Robert Kuzma, Jr. Thomas  
Larrick Anthony Joseph  
Len, Sr. Peter Lusty  
Oliver C. Mathews Charles  
Miller, Jr. Arthur Mus  
Arthur O. Mutschler Frederick  
Robert Nelson Edward A.  
Niegorski Paul P. Pawlack Dennis  
"Bud" Poling Sam Ritchie  
Anthony J. Samangy Albert  
G. Schaper Alvin C. Smith  
Duke Smith  
Raymond P. Sutton John C. (Jake)  
Thomas Robert W. Tusick David  
Garland Word, Sr. Nick Yorgin  
Victor D. Yoos  
James Zehnder

## SERVICE UNKNOWN

Craig Hunter Walker



## Your Professional Dry Cleaners



- Professional Dry Cleaning
- Executive Shirt Laundry Service
- All Work Done on premises



- Suede and Leather Cleaning
- Drapery Cleaning
- Wedding Gown Cleaning



# RED CAP CLEANING

*Serving Beaver County Since 1964*

Route 65, Conway, PA 15027 • (724) 869-0880  
Drive Thru Window Available



### \$4.00 OFF

Any Dry Cleaning and Pressing of \$20.00 or More

*With coupon, must present coupon with incoming order.  
Not valid with any other offer or coupon.  
Expires 9/30/25*



### \$8.00 OFF

Any Dry Cleaning and Pressing of \$40.00 or More

*With coupon, must present coupon with incoming order.  
Not valid with any other offer or coupon.  
Expires 9/30/25*

Protech Auto Group, Inc.  
Northern Lights Shopping Center  
1645 Beaver Road  
Baden, Pa 15005  
(724) 869-5660

## PROTECH AUTO GROUP INC

**TIRE & SERVICE CENTER**

PROTECH AUTO GROUP

GOODYEAR

Hours:  
M-F 7:30 AM - 6:00 PM  
SAT 8:00 AM - 5:00 PM

**Serving the Economy  
Borough area for  
over 20 years!**



[www.ProtechAutoGroup.com](http://www.ProtechAutoGroup.com)



- Patios & Retaining Walls
- Bulk Materials
- Landscaping & Hardscaping
- Lawn Mowing
- Yard Cleanup
- And More...

*Delivery and pickup available*



## BRIAN'S PROPERTY MAINTENANCE, LLC

Design-Build-Maintain

**724-719-7180**

105 Wallrose Heights Road, Economy Borough

## BOROUGH OF ECONOMY

2856 Conway Wallrose Road  
Baden, PA 15005-2306  
(724) 869-4779



**RE/MAX**  
*Select*  
REALTY



PROUD PARTNER OF THE PITTSBURGH STEELERS &  
PREFERRED REAL ESTATE PARTNER OF THE PITTSBURGH PIRATES

### Peggy Greb

724-816-2900 (cell)

724-933-6300 x242

peggy@peggygreb.com

[www.EconomyBoroRealEstate.com](http://www.EconomyBoroRealEstate.com)



Put my 23 years of experience selling homes in Economy Borough to work for you! Call me for a no-pressure consultation.

# FAST & RELIABLE SERVICE WITHOUT THE WAIT

[KIMSNOTARY.ORG](http://KIMSNOTARY.ORG)

# Kim's NOTARY

*celebrating 21 years in* **BADEN, PA**



CALL OR TEXT

## 724-462-1148